

## CALPROSMART®

Distant management of your IBD patients with rapid quantitative CalproSmart self-test

**An easy to use test, CalproSmart self-test allows the patient to perform their own measurements of Calprotectin at regular intervals. The quantitative results from the test performed at home are sent to the treating physician or the health care team through our secure web portal. With CalproSmart self-test a doctors' appointment in the clinic can easily be shifted to a phone call.**



- Sub-clinical detection of flare and identification of high-risk patients of short-term clinical relapse with self-test<sup>1</sup>
- Early detection allows for early intervention. This allows for quicker remission<sup>2</sup>
- E-health and distant management allow reduced acute and routine visits to outpatient clinic<sup>3</sup>
- Increased quality of life<sup>4</sup>



<20 min run time  
4 simple steps



Range: 77-1500mg/kg  
Color-coded presentation



Correlation with  
CalproLabELISA:  
 $R^2=0,875$



Sensitivity: 94%  
Specificity: 78%



12+month shelf life



Cloud storage  
EU GDPR compliant



Open API to connect to  
HIS, Databases and  
PRO apps



CAL202: 2 tests  
CAL230: 3 tests  
CAL240: 4 tests  
CAL250: 5 tests

1. Reenaers C, Bossuyt P, Hindryckx P, Vanpoucke H, Cremer A, Baert F. Expert opinion for use of faecal calprotectin in diagnosis and monitoring of inflammatory bowel disease in daily clinical practice. *United European Gastroenterol J.* 2018;6(8):1117-1125. doi: 10.1177/2050640618784046. DOI: 10.1177/2050640618784046 PMID: 30288273
2. Cross & Watson (Editors), *Telemanagement of Inflammatory Bowel Disease*, p. 85-95, Springer 2016
3. De Jong MJ, van der Meulen-de Jong AE, Romberg-Camps MJ, et al. Telemedicine for management of inflammatory bowel disease (myIBDcoach): a pragmatic, multicentre, randomised controlled trial. *Lancet.* 2017;390(10098):959-968
4. Internal survey amongst existing customers

## How does it work?

Patients with established IBD are registered into the web portal and given access to using the CalproSmart self-test.

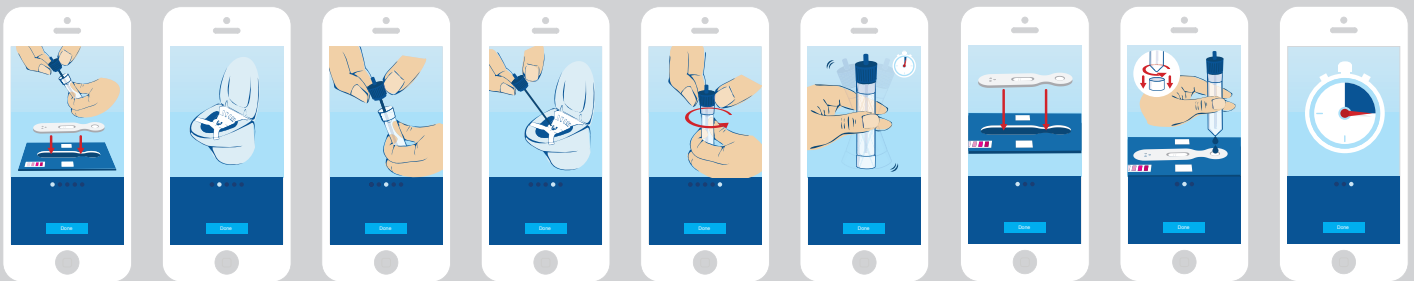
How often the patient is to perform the test at home is decided by the treating physician and/or the team following up; however, many use 3-month intervals as standard.

The intervals are dependent upon the patients' condition and history and can easily be adjusted in the web portal. Every time the patient performs the test at home, the results are sent to the web portal with a notification sent to the treating physician.

As treatment should not be adjusted solely on Calprotectin levels, the patient can then be contacted via phone or other platforms/PRO apps for short consultation and input of symptoms experienced.

### THE TEST:




CalproSmart self-test is the simplest test on the market for a self test for Calprotectin that provides quantitative results.



### RESULTS AND THEIR INTERPRETATION

CalproSmart provides quantitative results in the range 77-1500 mg/kg.

The results are also represented as color-coded categories:

Value (mg/kg):	Indication	Color-code
<200	Mild	Green 
200-500	Moderate	Yellow 
>500	Severe	Red 

The values can be changed according to need.

All results are sent directly to web portal, while email is sent to treating physician or investigator. Results are stored in portal, and can also be exported or passed on to other platforms and databases through various levels of integration.



### THE WEBPORTAL

This is the backbone of the test, where both users and patients are registered. All submitted results can also be viewed here. The web portal is online portal accessible from any computer or device with internet access, and access is gained through personalized user accounts.



### THE APP

CalproSmart self-test is used by the patient by following the guidance and capturing the image from the test cassette using a mobile phone with CalproSmart app. This all is available free of charge for both Android and iPhone.

The app has a step by step guide with images and description in local languages to ensure that the patient performs the test according to the protocol.

*Disclaimer: CalproSmart is not a FDA approved device, and can thus be only used for clinical research in the US market.*